

## STRETCHTULLE

### TECHNICAL DATA SHEET

October 2017

Elastic mesh that stretches seamlessly up to 8 m wide. Open mesh weave for ultimate flexibility and amazing special effects. Use our flame retardant StretchTulle to create reusable fabric ceilings for your trade show booth or corporate event, or as a stretch scrim for holographic projection effects and exciting video mapping. The netted structure of the textile ensures that ceiling sprinklers can fully activate if necessary. Mesh size: H 2 mm x W 4 mm.

» <b>ARTICLE CODE</b>	» <b>WIDTH</b>	» <b>LENGTH</b>	» <b>WEIGHT</b>
3521 0500 #	500 cm	± 45 m	200 g/m <sup>2</sup>

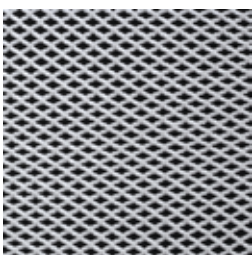
» <b>COMPOSITION</b>
98% PES + 2% EA

» <b>FLAME RESISTANCE</b>	
NFP 92-503-507 (1980)	CLASS M1
BS 5867 PART 2 TYPE B	PASS

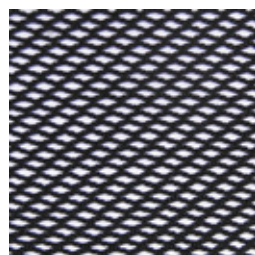
» <b>TEAR STRENGTH</b>	» <b>TENSILE STRENGTH</b>
ISO 13937-3: 2000	ISO 13934-1: 1999
Warp: 22N - Weft: 15N	Warp: 590N - Weft: 110N

» <b>AIR PERMEABILITY</b>	» <b>COLOUR FASTNESS TO LIGHT</b>
EN ISO 9237 (1995)	ISO 105-B02-1999+Am 2002
Average: 3980 l/(m <sup>2</sup> .s)	note 6

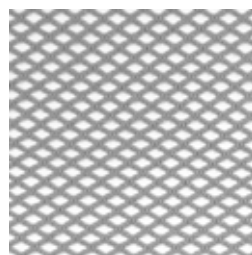
» **AVAILABLE COLOURS**



0003



0007



0025